



Stony Brook University

Application of Wastewater-based Epidemiology in Suffolk County, NY: Surveillance of SARS-CoV-2, Antiviral Drugs, and More

Mian Wang, Ph.D.

Cheng-Shiuan Lee, Ph.D.

2022 Clean Water Symposium

June 17th, 2022

**FAR
BEYOND**

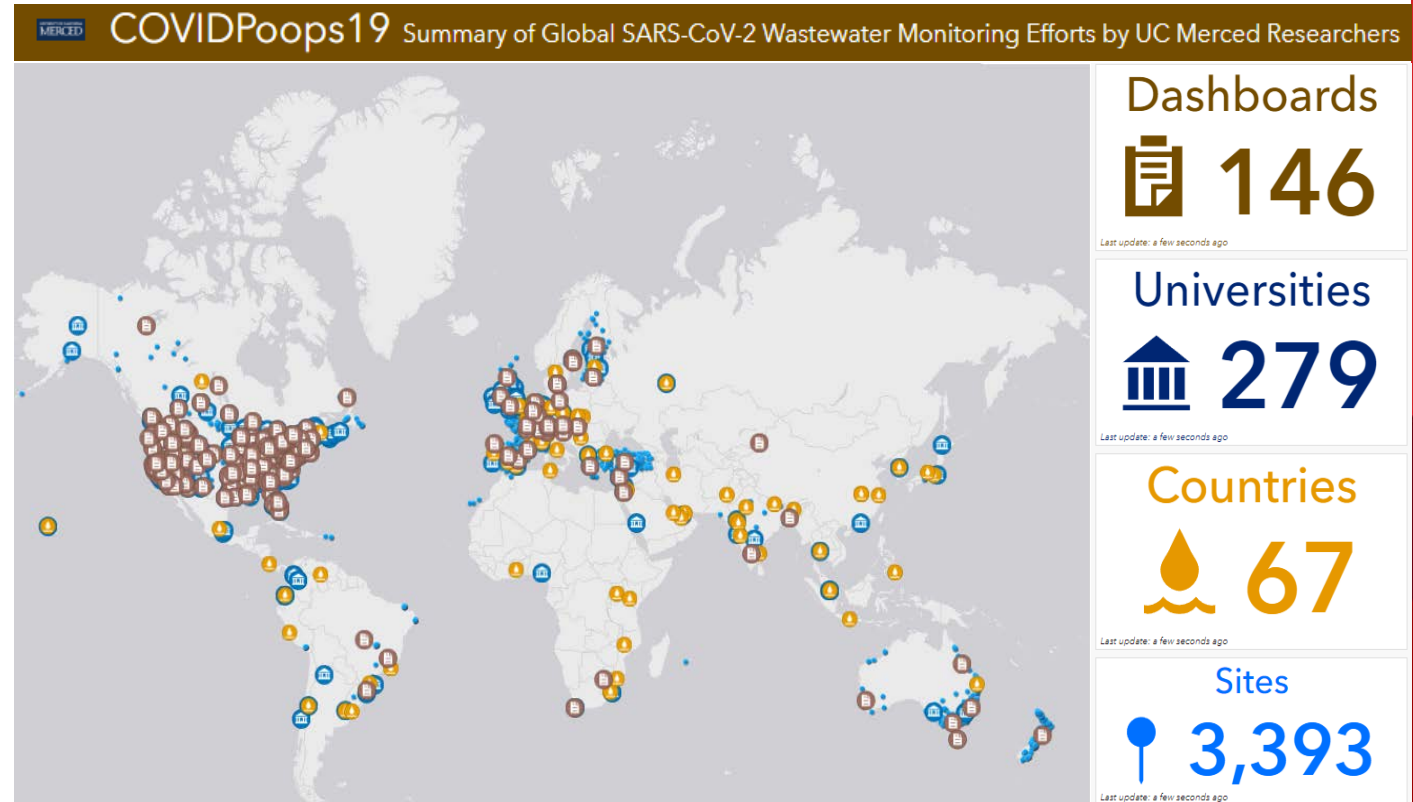


**Stony Brook
University**

NYS Center for
Clean Water Technology

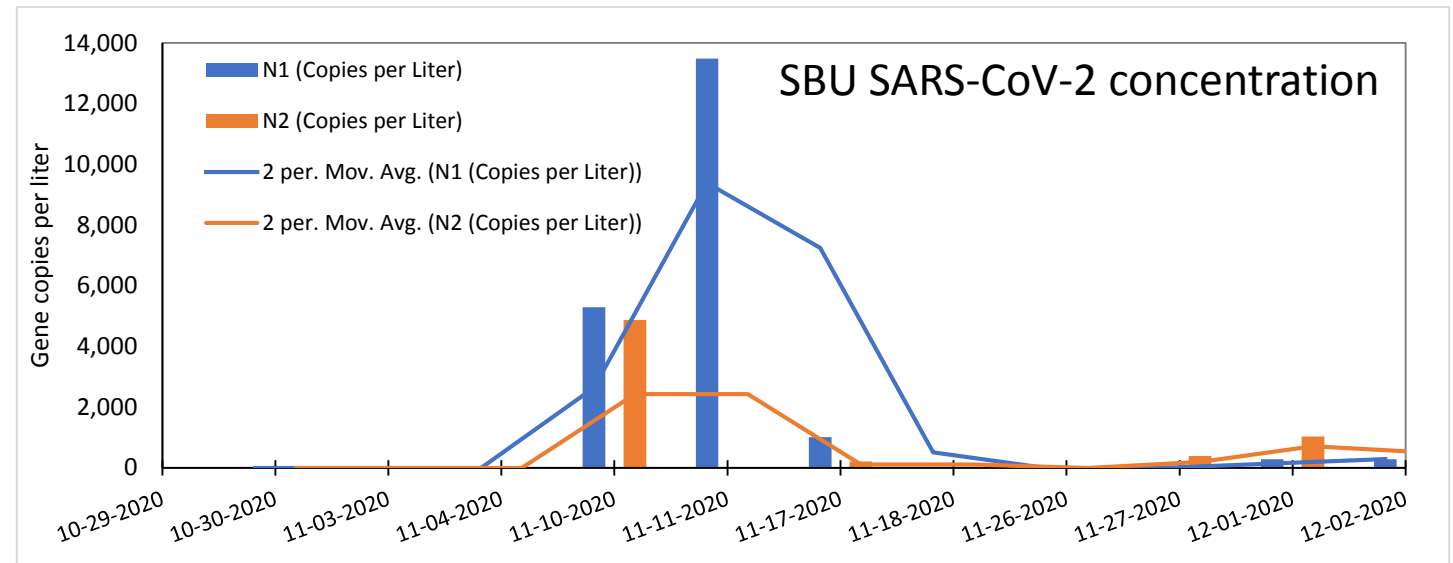
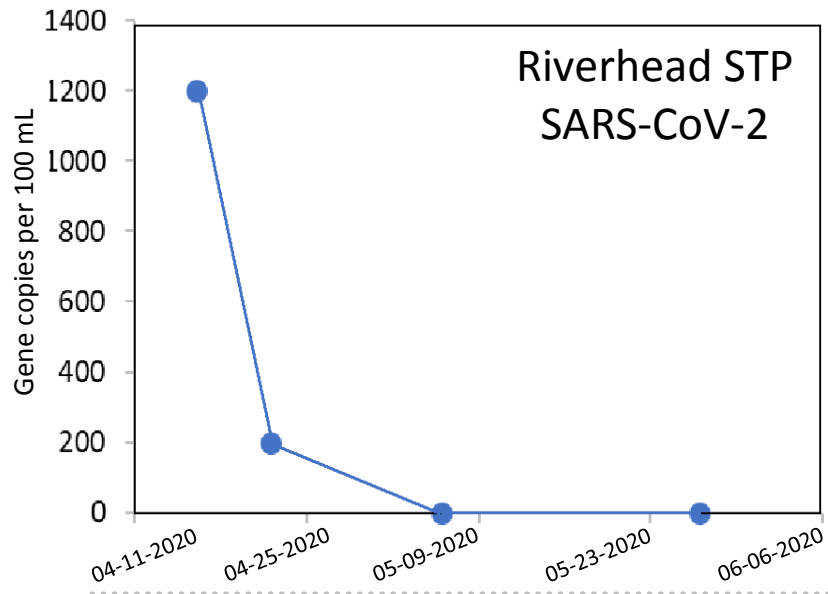
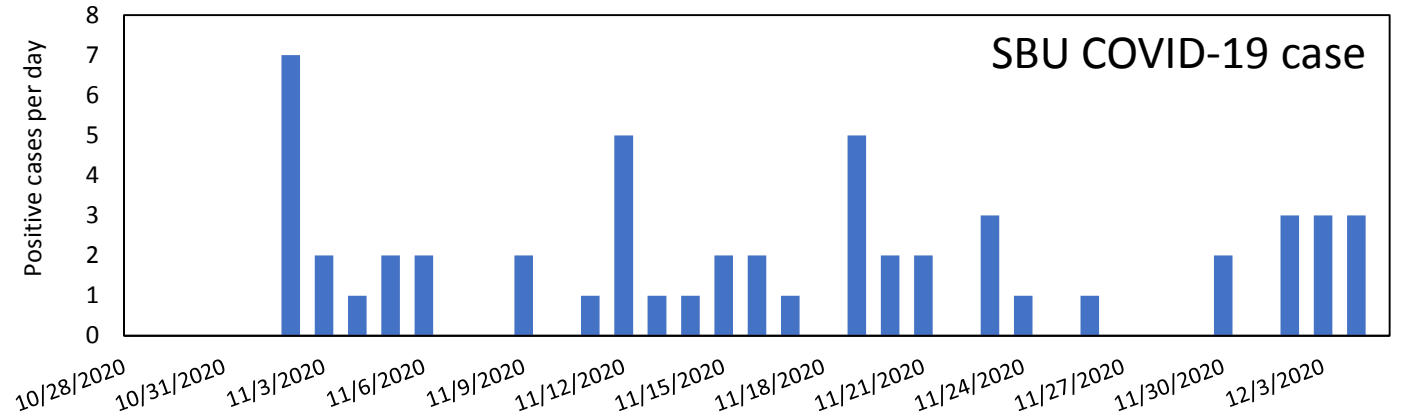
Wastewater-based Epidemiology (WBE)

- **WBE (wastewater surveillance):**
 - provide information on the risk factors and health status of a population through analysis of their wastewater
- Historically used in the 1990's to fight polio
- Adopted to monitor illicit drug use, antibiotic resistance, and pathogens
- Unbiased and non-invasive population health assessment tool
- Used globally to monitor SARS-CoV-2 in wastewater
 - U.S., Canada, Europe, Australia, etc.



First efforts of wastewater surveillance

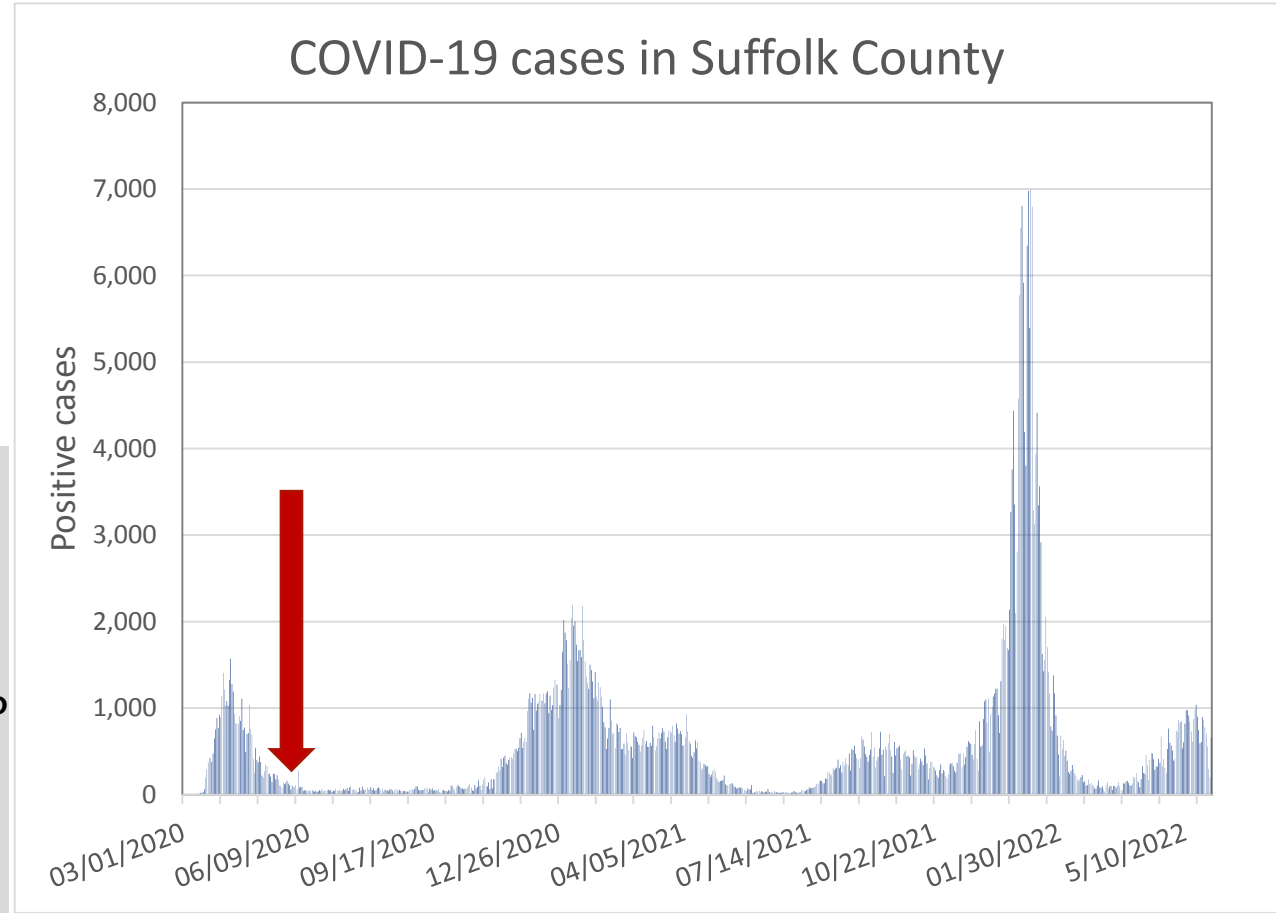
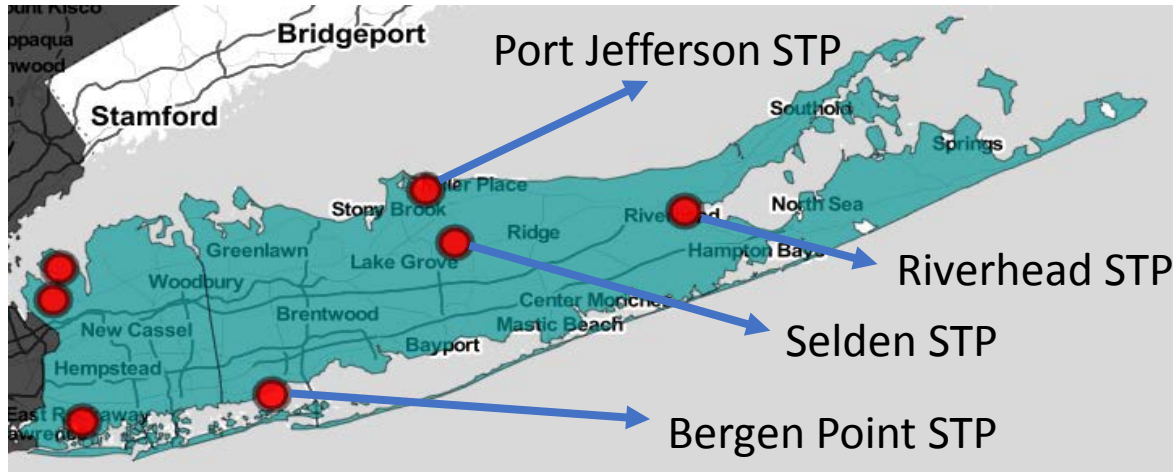
- In **April 2020**, began collecting raw wastewater samples from **Riverhead STP**
- During **fall 2020**, began sampling effluent from the **Stony Brook University dorms**





Wastewater Surveillance of SARS-CoV-2 in Suffolk County

- **June 2020:** raw wastewater samples from the Bergen Point STP, largest STP in Suffolk County
- **April 2021:** Selden STP
- **February 2022:** Port Jefferson STP
- **May 2022:** Riverhead STP



Sampling

- Overview of Sampling Strategy
 - Collect **untreated wastewater** from STPs
 - Sampling **upstream** from **pump stations**
- Frequency of Sampling
 - **Two/three times weekly sampling** to provide actionable and timely data regarding changes in COVID-19 transmission
 - **A series of multiple samples** taken from the same point reveal trends in viral transmission
- Types of Samples
 - **Composite samples:** take a small quantity of wastewater continuously to create a composite sample over 24 hours

WWTP name	Population served	Capacity (MGD)
Bergen Point STP	278,775	30.5
Selden STP	24,147	2.4
Port Jefferson STP	3,349	1.15
Riverhead STP	7,741	1.3

Composite Autosampler



Analytical workflow

Sample preparation



Sample concentration

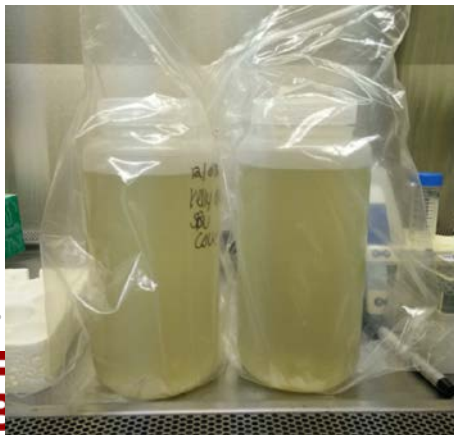


RNA extraction

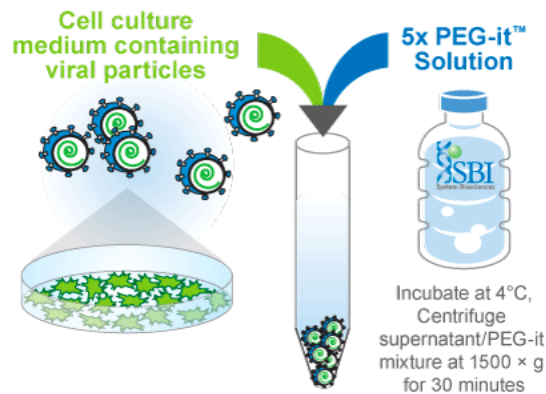


RNA measurement

Process within 24 hours by centrifugation to remove large solids



Polyethylene glycol (PEG) precipitation



Safely concentrate Virus 10- to 100-fold

From the suspension by an extraction kit

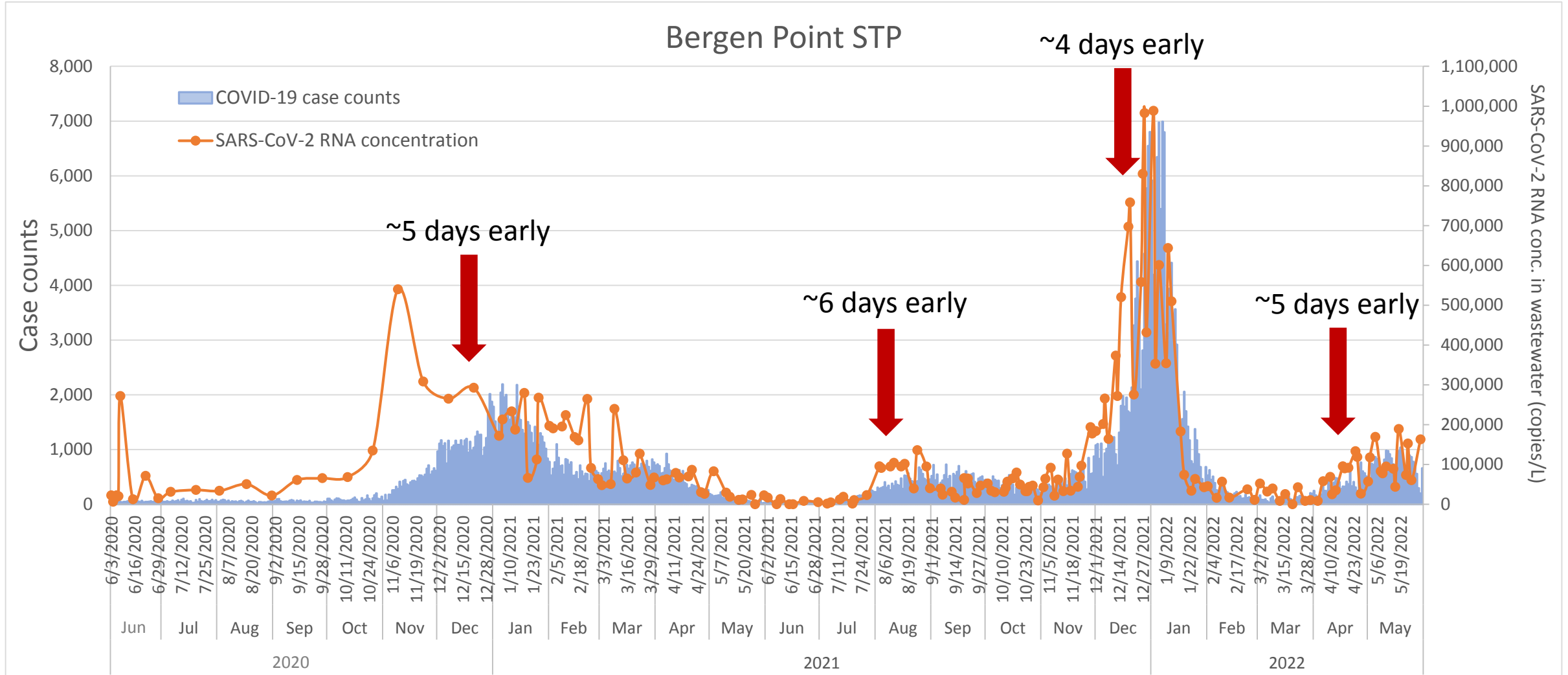


RT-digital PCR: detection and quantification method

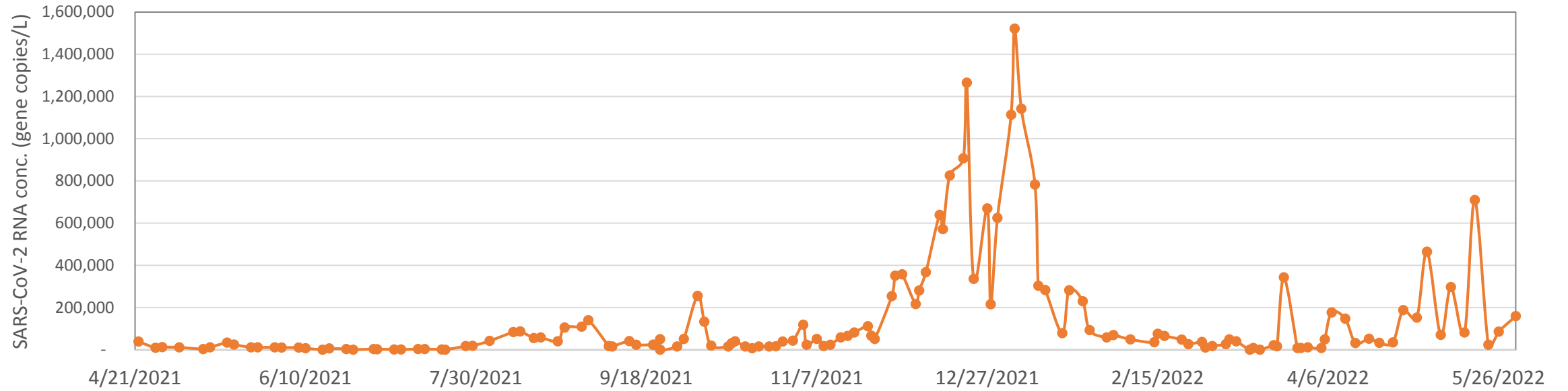




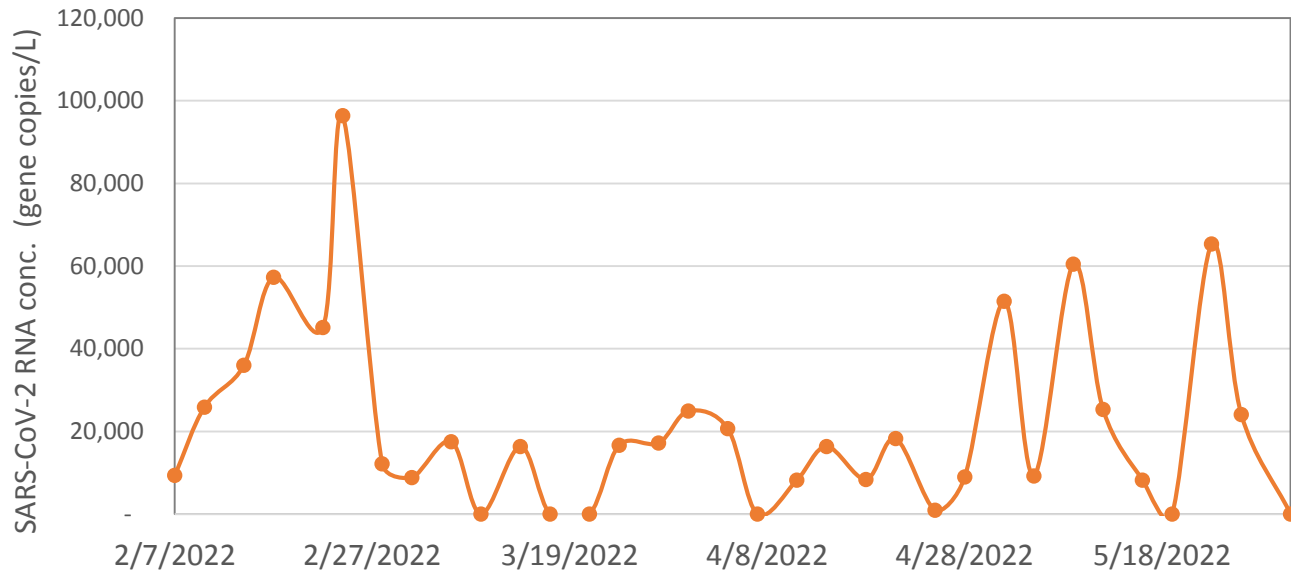
COVID-19 wastewater data in Suffolk County



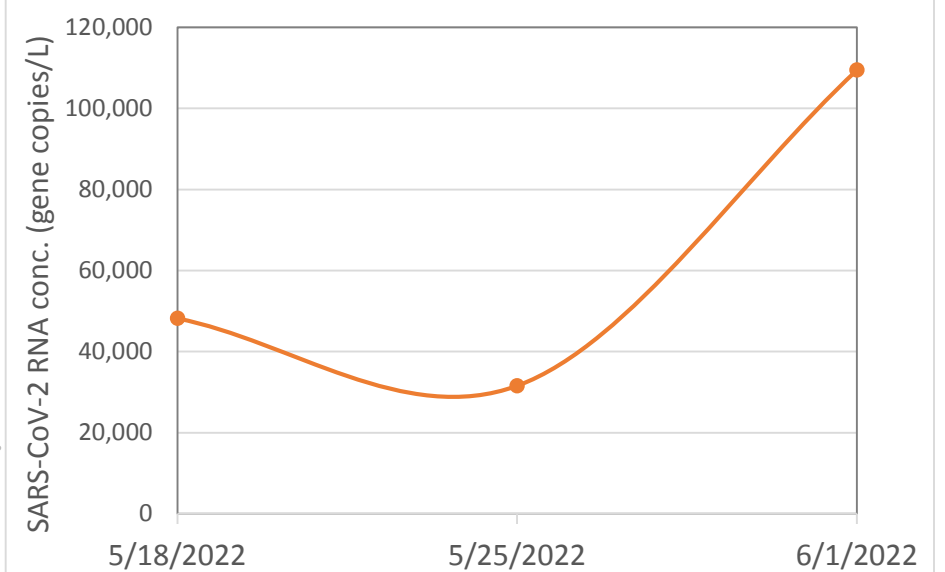
SD11 Selden STP



SD1 Port Jefferson STP



Riverhead STP





St

55

Participating counties

99

Participating WWTPs

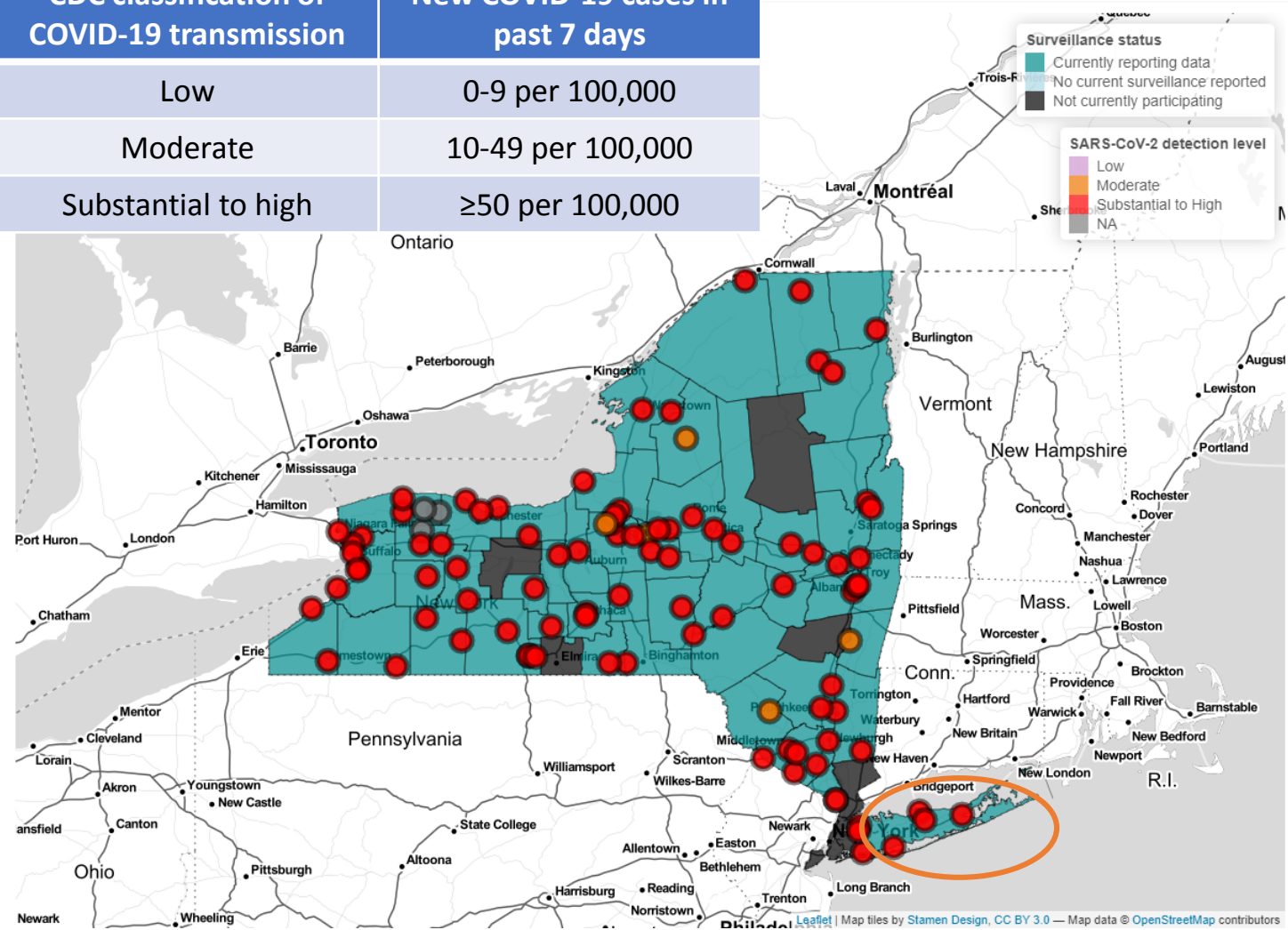
4,750,009

Population covered

¹ Participation as of Jun 14, 2022

- State Dashboard
- Resources and toolkit
- Information
- Wastewater trend
 - SARS-CoV-2 intensity
 - Gene copies
- Cases data
 - New cases
 - Active cases
 - Test positivity

CDC classification of COVID-19 transmission	New COVID-19 cases in past 7 days
Low	0-9 per 100,000
Moderate	10-49 per 100,000
Substantial to high	≥50 per 100,000



FAR BEYOND

<https://mbcolli.shinyapps.io/SARS2EWSP/#>

Antiviral drugs in wastewater

- Monitor antiviral drugs and other licit and therapeutic drugs
 - Complement and strengthen RNA-based method
 - Understand the impact of the pandemic on pharmaceutical consumption

#	Compound	Abbrev.	Note
1	Chloroquine	CQ	Antiviral
2	Hydroxychloroquine	HCQ	Antiviral
3	Remdesivir	REM	Antiviral
4	Desethyl Chloroquine	DCQ	Metabolite
5	Desethyl Hydroxychloroquine	DHCQ	Metabolite

- FDA Emergency Use Authorization (EUA):
 - CQ and HCQ (March 28, 2020)
 - Remdesivir (May 1, 2020)

Pharmaceuticals in wastewater

#	Compound	Note	OTC	#	Compound	Note	OTC
1	Acetaminophen	Analgesic/Antipyretic	Y	14	Nifedipine	Antihypertensive	N
2	Atenolol	Antiarrhythmic	N	15	Primidone	Anticonvulsant	N
3	Carbamazepine	Anticonvulsant	N	16	Propranolol	Antiarrhythmic	N
4	Cimetidine	Antihistamine	Y	17	Ranitidine	Antihistamine	Y
5	Diclofenac	Anti-inflammatory	N	18	Salbutamol	Antiasthmatic	N
6	Diltiazem	Antiarrhythmic	N	19	Sulfamethoxazole	Antibiotic	N
7	Diphenhydramine	Antihistamine	Y	20	Trimethoprim	Antibiotic	N
8	Fenofibrate	Anticoagulant	N	21	Venlafaxine	Antidepressant	N
9	Fluoxetine	Antidepressant	N	22	Warfarin	Anticoagulant	N
10	Ketoprofen	Anti-inflammatory	N	23	Caffeine	Stimulant	-
11	Lamotrigine	Anticonvulsant	N	24	Paraxanthine	Metabolite of caffeine	-
12	Metoprolol	Antiarrhythmic	N	25	Nicotine	Stimulant	-
13	Naproxen	Anti-inflammatory	Y	26	Cotinine	Metabolite of nicotine	-

Analytical method

100 mL wastewater sample

Add isotopically labelled
standard

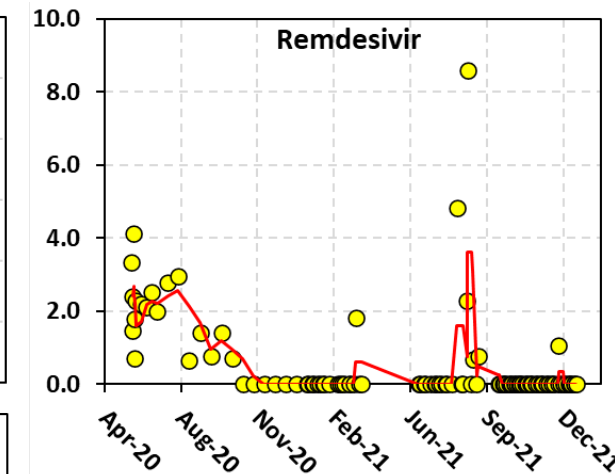
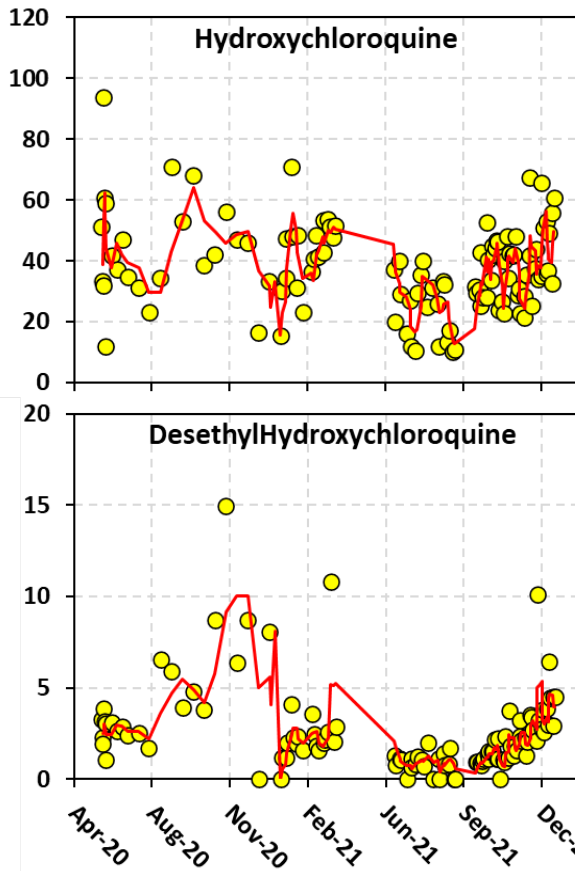
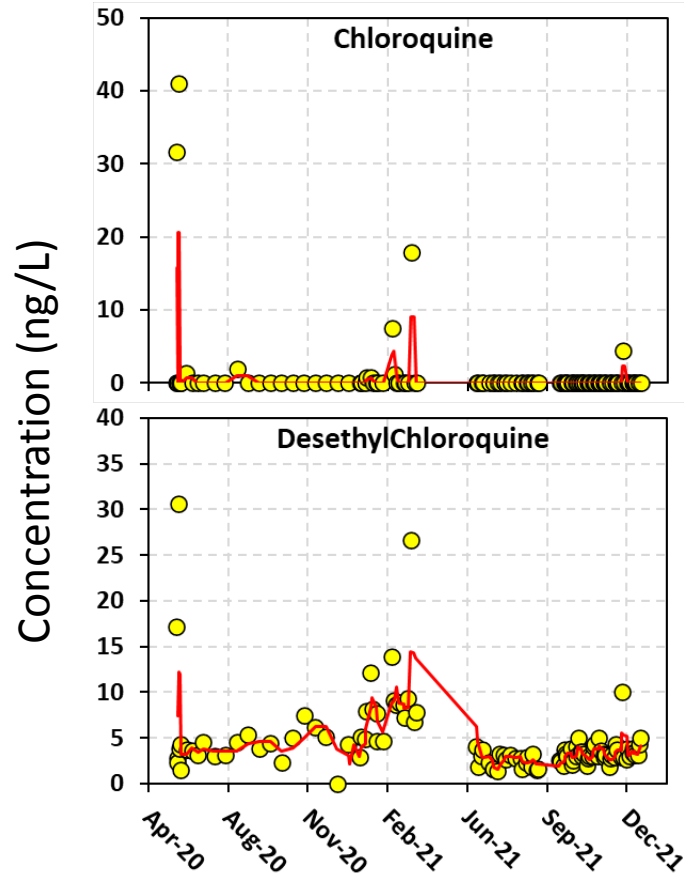
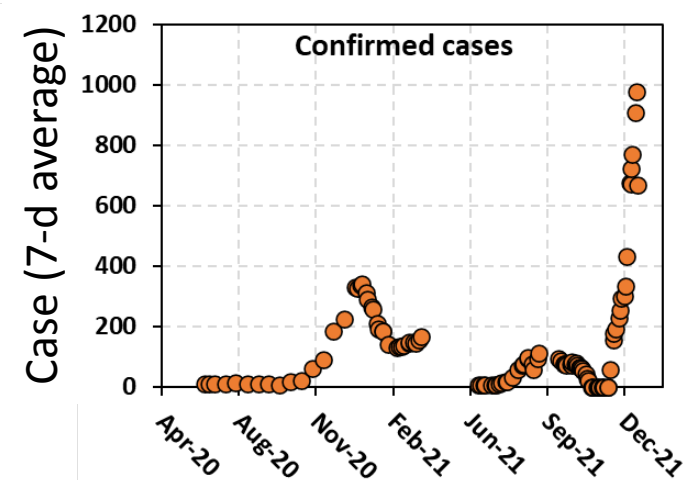
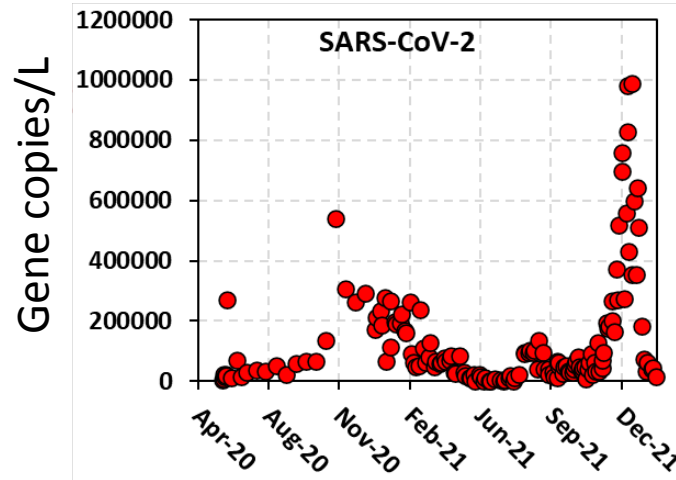
Solid phase extraction
(HLB cartridge)

Add internal standard

LC-MS/MS analysis

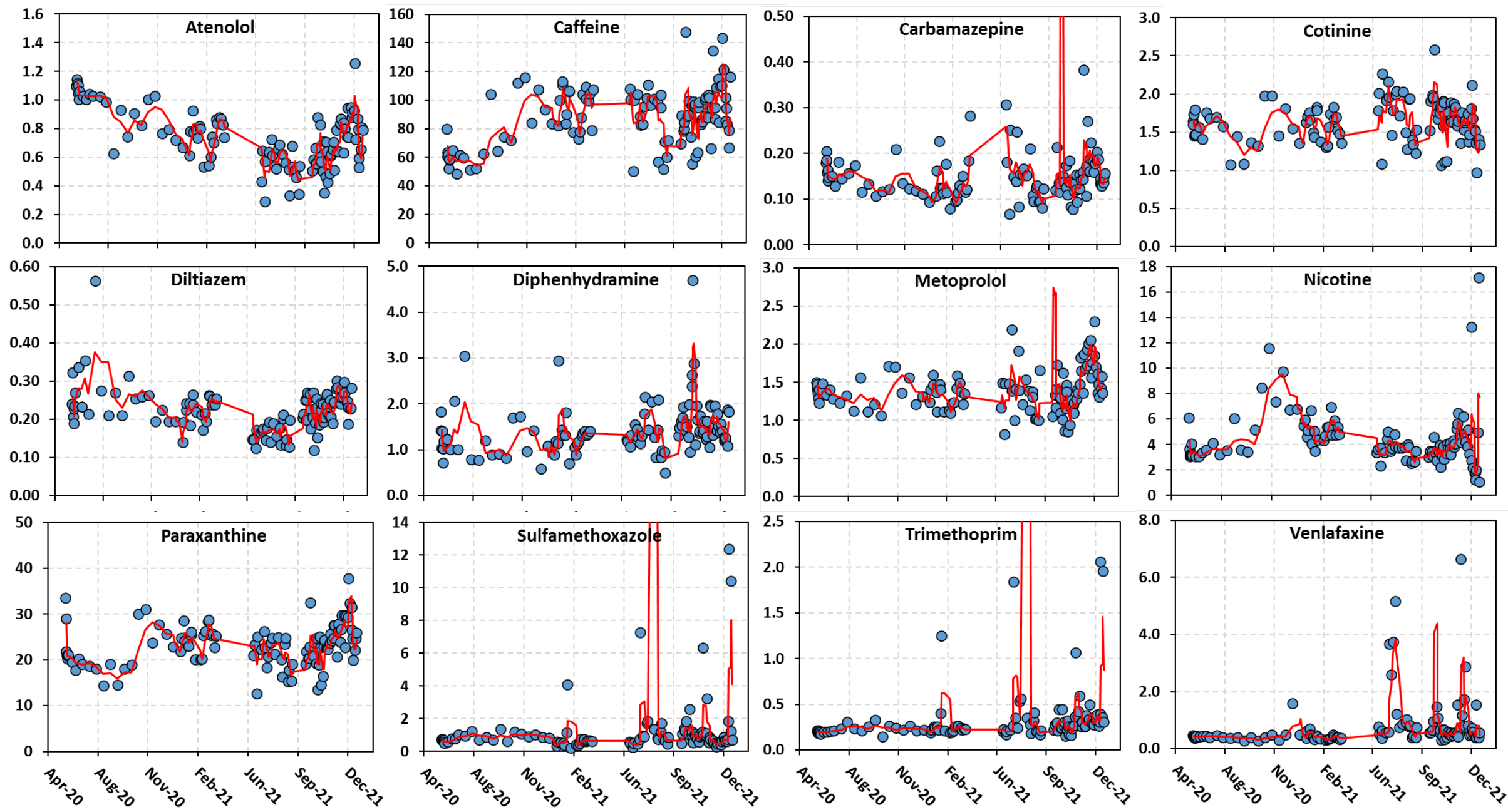


Time-series data (raw concentration)



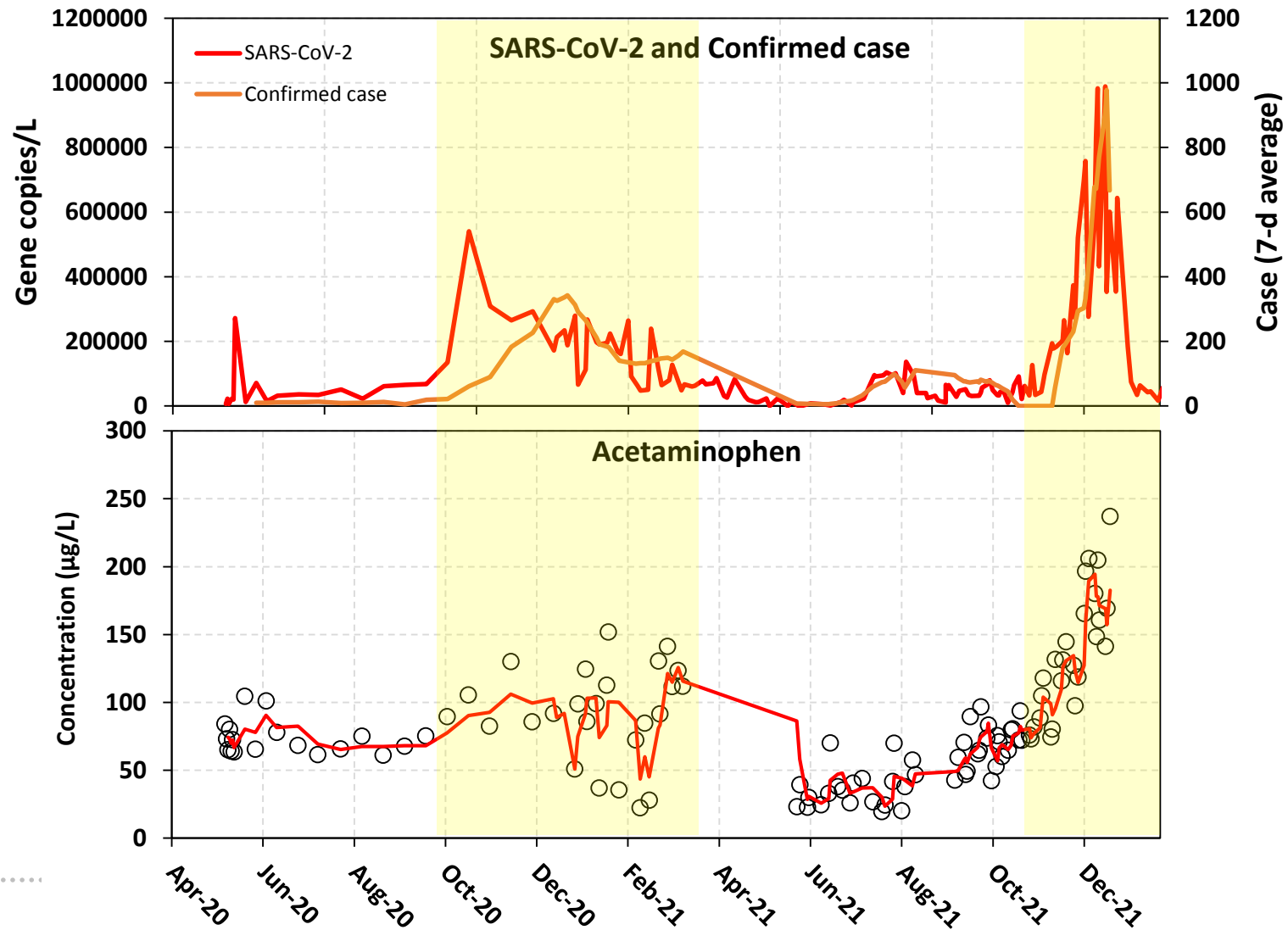
- Unstable in wastewater (e.g. Remdesivir)
- Use for treating multiple diseases (e.g. HCQ)

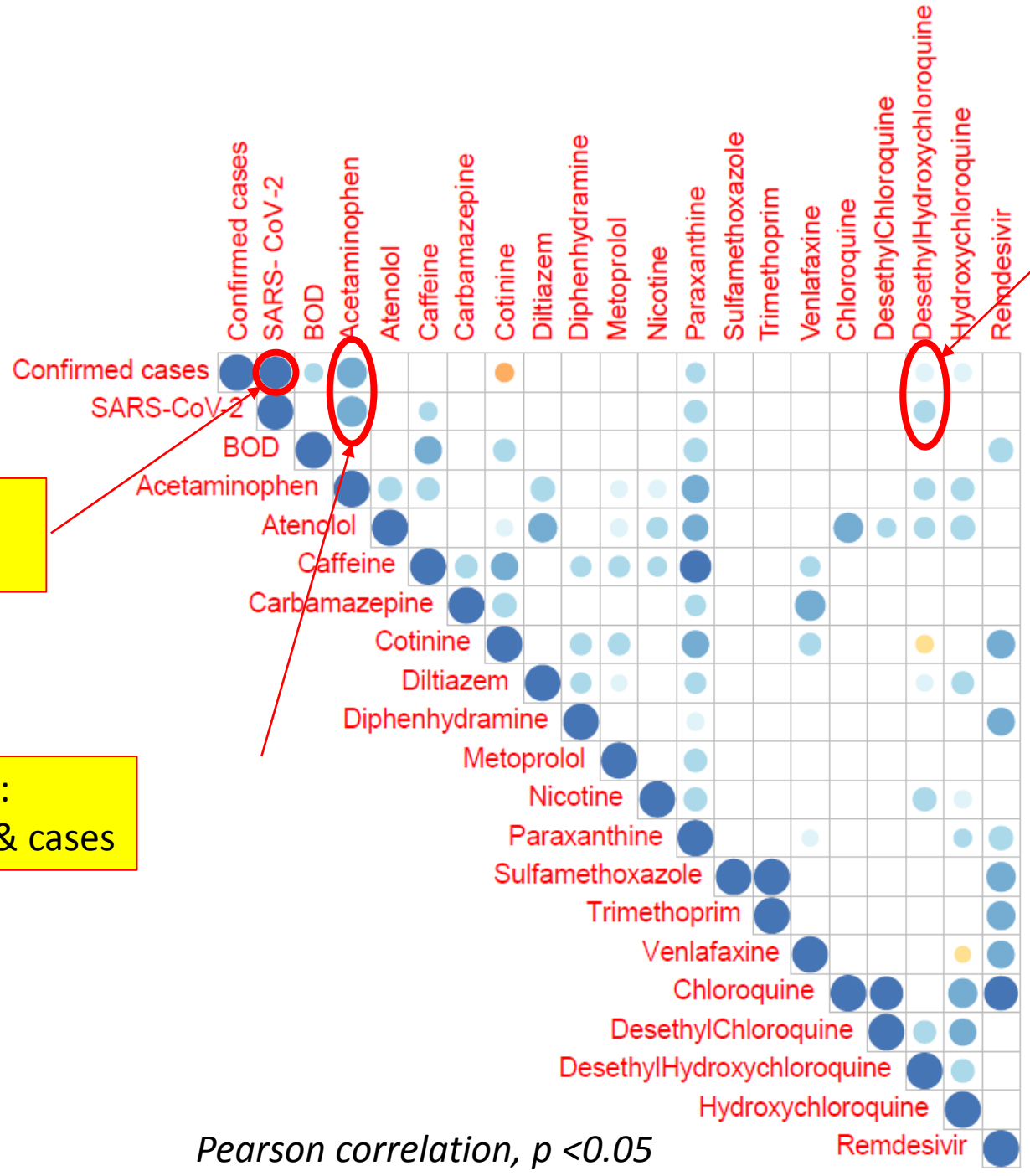
Concentration ($\mu\text{g/L}$)



BÉYOND

Time-series data





Positive correlation:
DHCQ vs. virus & cases

Strong positive correlation:
virus conc. vs. cases

Good positive correlation:
acetaminophen vs. virus & cases

Governor Hochul Updates New Yorkers on Efforts to Address the Opioid Epidemic

COMBAT ADDICTION

HEALTH

BUDGET

The New York Times

Fentanyl Tainted Pills Bought on Social Media Cause Youth Drug Deaths to Soar

Teenagers and young adults are turning to Snapchat, TikTok and other social media apps to find Percocet, Xanax and other pills. The vast majority are laced with deadly doses of fentanyl, police say.

Naloxone

Naltrexone

(±)-Methadone

EDDP

Meperidine

Buprenorphine

Dihydrocodeine

nature

Explore content

About the journal

Publish with us

Subscribe

nature > news > article

NEWS | 01 June 2022

Mega-model predicts US opioid deaths will soon peak

The crisis is projected to claim more than half a million more lives from 2020 to 2032, although yearly deaths are on course to start falling before 2025.

WSJ | OPINION

Home World U.S. Politics Economy Business Tech Markets Opinion Books & Arts Real Estate Life &

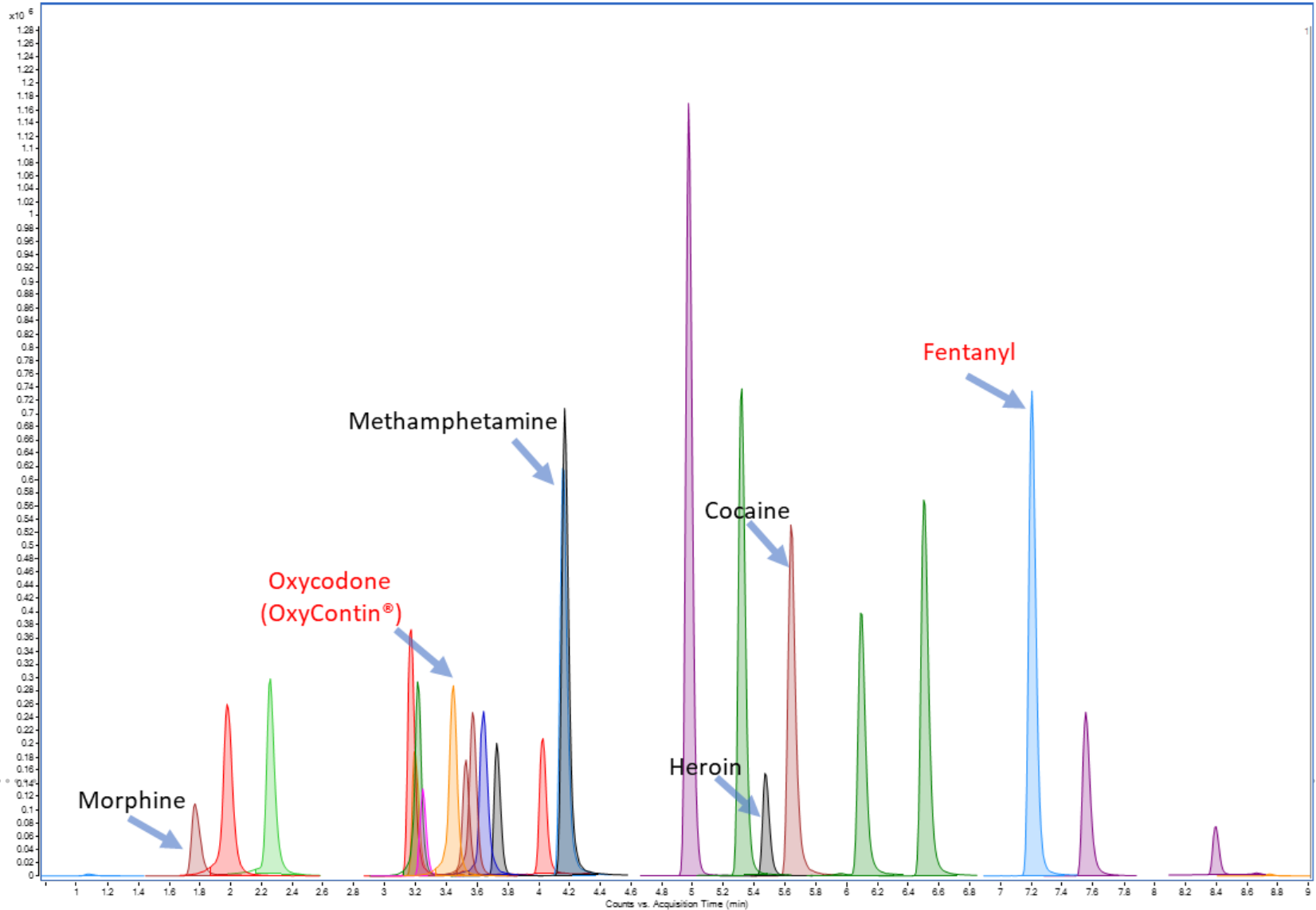
Fentanyl Overdose Rates Are Rising Fast

The drug will continue killing Americans until Biden decides to get control of the border.

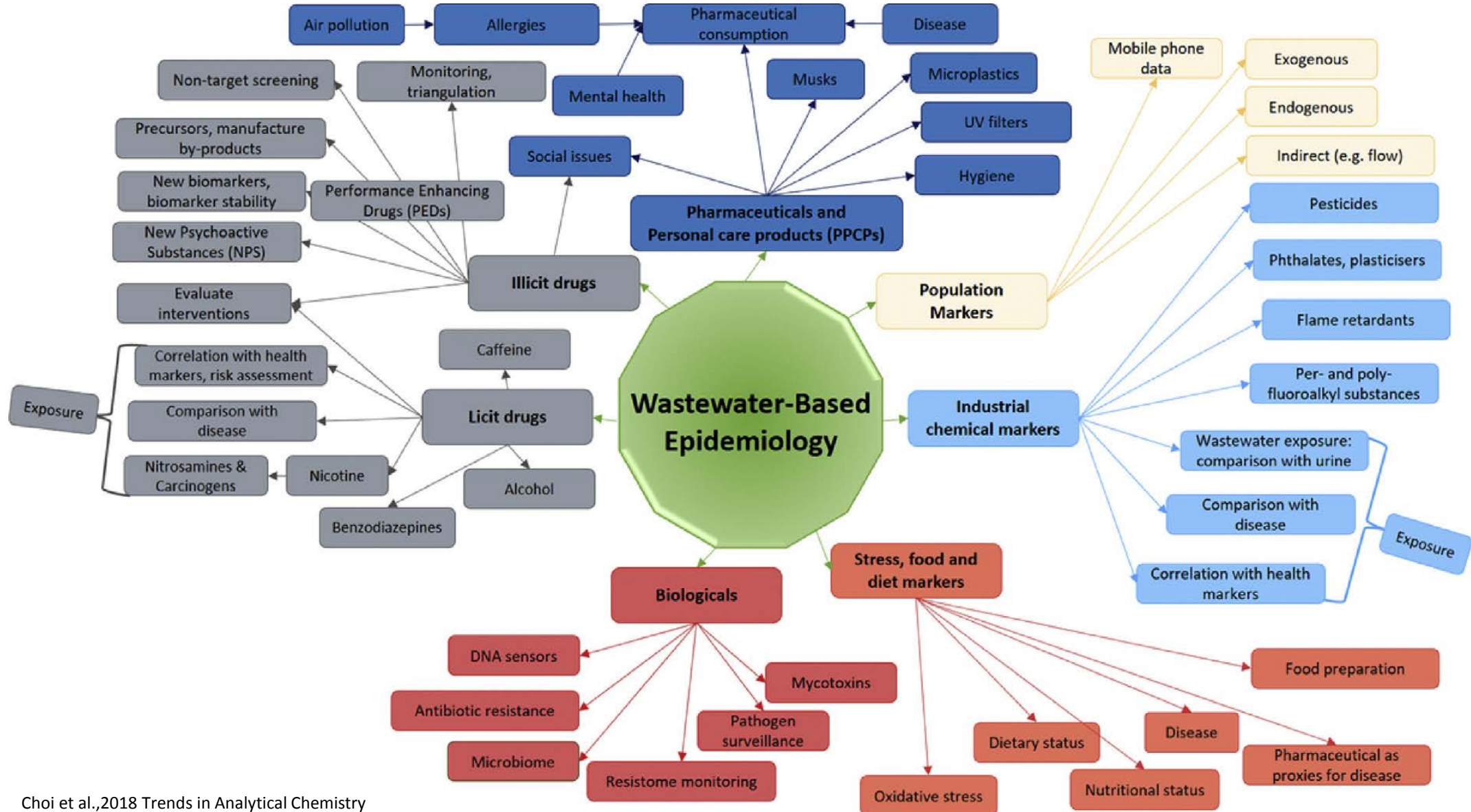
By Joseph Grogan and Casey B. Mulligan
May 18, 2022 6:22 pm ET

alcohol

Wastewater surveillance of opioids



Future of wastewater surveillance



Acknowledgments

- Drs. Christopher Gobler, Arjun Venkatesan, Deepak Nanjappa, Xinwei Mao, Xiayan Ye
- Ann Marie Famularo, Hannah Winslow, Timothy Wong
- CCWT team and Gobler Lab
- Thank you to Stony Brook University, NYS, Suffolk County, Bergen Point STP, SCDHS, DOH for support
- Thank you for your attention.

- Follow us on Twitter: @nysccwt
- <https://www.stonybrook.edu/cleanwater/>
- Sign up for our email list: ccwt@stonybrook.edu

Influent concentration
(ng/L or µg/L)

WW flow
attenuation

Daily mass load
(mg/day)

population
metabolic rate
excretion rate

Daily consumption
(mg/capita/day)

- Bergen Point STP
 - Influent temperature underground: 10–11 °C (winter) and 18–20 °C (summer)
 - Average travel time in sewer lines: 40 minutes to 8 hours
 - Composite sample: collecting every 15 min at <6 °C

24-h stability test in wastewater

